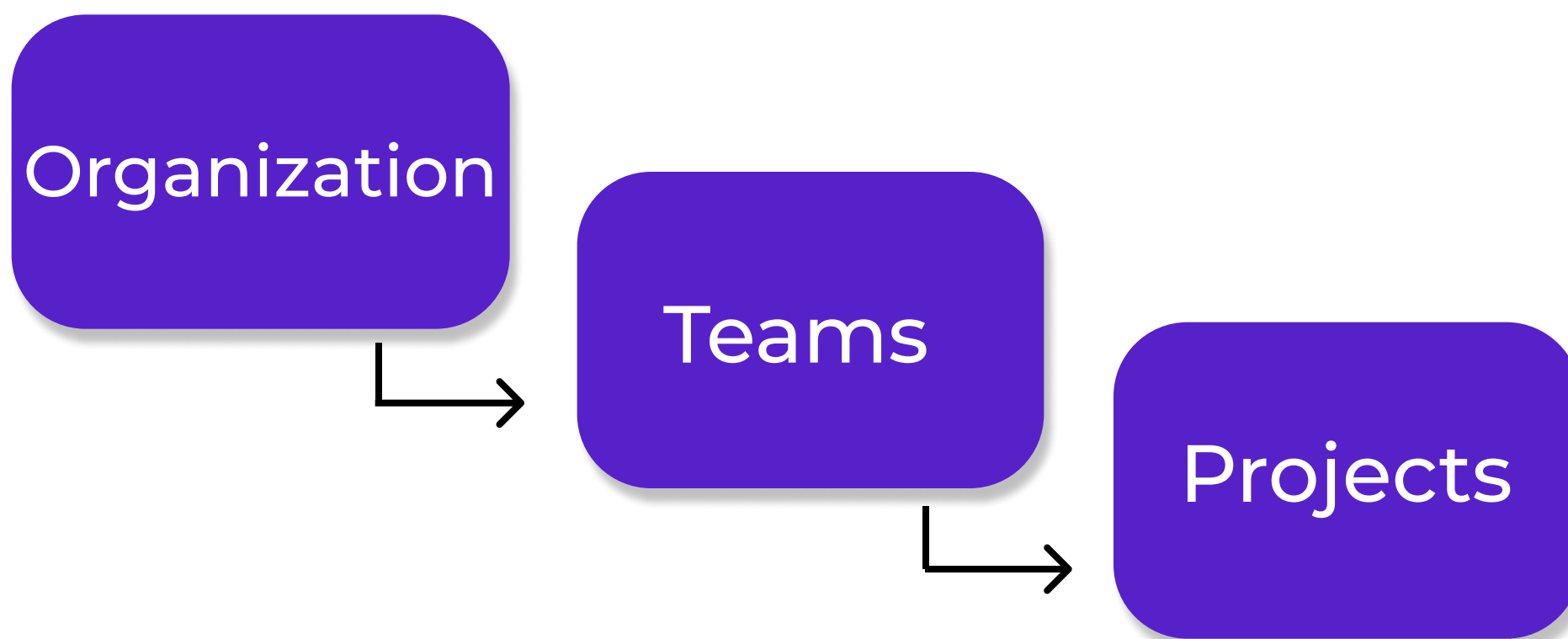


Data Segregation

Current SCM has a number of mechanisms for segregating data across teams and projects to ensure controlled access to information.

Organizations can have multiple teams, and no data about a team can be accessed by users within the organization unless they are a named member of the team.

Within the organization there are three general segments of data:



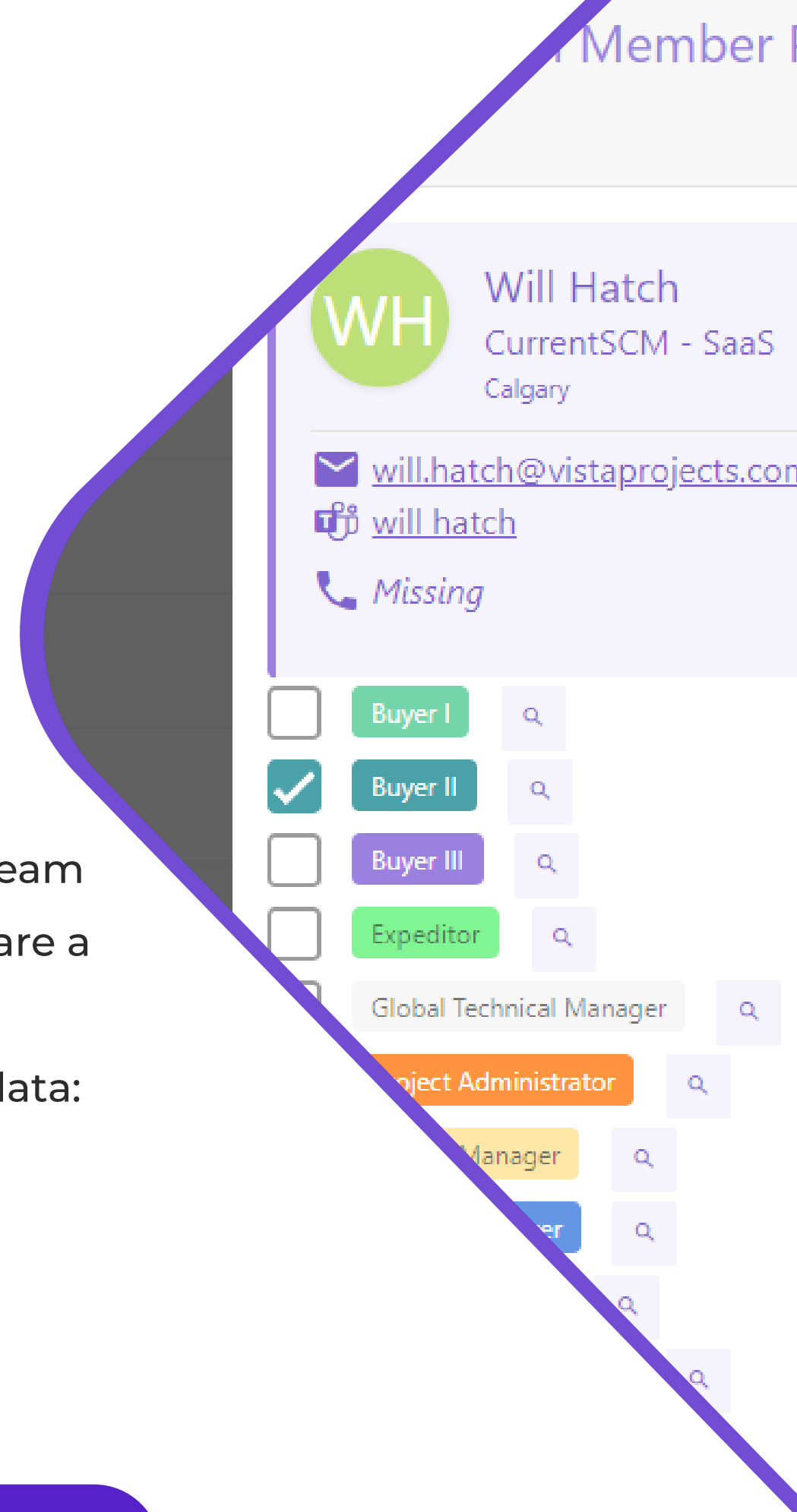
Advantages of This Structure:

Organizations can segregate data within teams to adhere to confidentiality requirements or management differences between business units or groups.

You have explicit control to determine who can see and use project level data. Allows for third party (e.g., Client) access to specific project data without exposing Team Data about other Clients, and without risking the Client changing transactional data.

Role Changes and Audit Logging:

All changes are effective instantly and are logged for audit purposes. Further, all data accessed is logged for audit.



Let's get in touch.